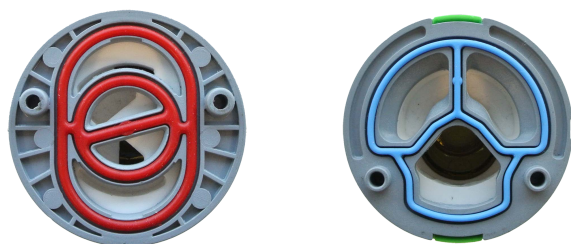


Hyperflow™

WAIPORI SHOWER MIXER

COMPARISON OF FASTFLOW® AND HYPERFLOW™ CARTRIDGES



COMPARISON OF FASTFLOW® AND HYPERFLOW™ BARRELS

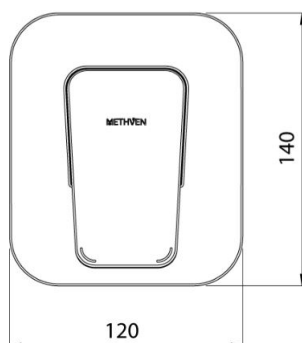
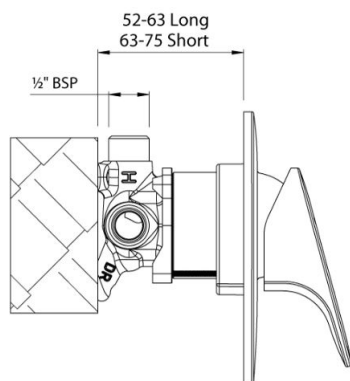


FEATURES AND BENEFITS OF HYPERFLOW™:

- Excellent performance on equal low pressure for shower mixers and bath fillers
- Big ports + big cartridge
- 47mm Cartridge – 10mm inlet/15mm outlet
- 8.6 l/p on full cold at 20 kPa
- 10.5 l/m at 40 degrees at 20 kPa
- 8.6 l/m on full hot at 20 kPa

Hyperflow™

WAIPORI SHOWER MIXER



CONSTRUCTION: DR (Dezincification Resistant) brass body

CARTRIDGE: 47 mm ceramic cartridge with Hyperflow™ technology

CLASSIFICATION: Suitable for equal low systems

INLET CONNECTIONS: 1/2 " BSP Male

OUTLET CONNECTIONS: 1/2 " BSP Male

OPTIMUM WORKING PRESSURE: 25 - 500kPa

OPERATING TEMPERATURE: 5 °C - 80 °C

- Equal Low applications for shower mixer and bath filler
- Larger ports and larger cartridge - 10mm inlet/15mm outlet
- Increase flow rate of 20% at 40°C on 20 kPa
- Large 140 x 120mm metal backplate
- DR brass body for greater durability and safe water
- Concealed screws to positively fasten faceplate
- Two dome covers provided for greater installation tolerance
- Brass feet for ease of installation

WAHFSCP

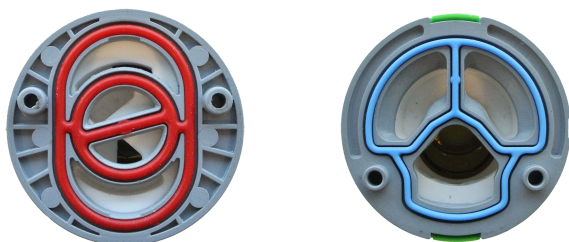
Chrome

<http://www.methven.com/nz/>

Hyperflow™

FUTURA SHOWER MIXER

COMPARISON OF FASTFLOW® AND HYPERFLOW™ CARTRIDGES



COMPARISON OF FASTFLOW® AND HYPERFLOW™ BARRELS

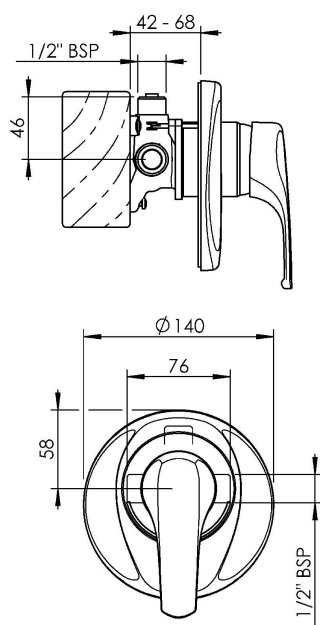


FEATURES AND BENEFITS OF HYPERFLOW™:

- Excellent performance on equal low pressure for shower mixers and bath fillers
- Big ports + big cartridge
- 47mm Cartridge – 10mm inlet/15mm outlet
- 8.6 l/p on full cold at 20 kPa
- 10.5 l/m at 40 degrees at 20 kPa
- 8.6 l/m on full hot at 20 kPa

Hyperflow™

FUTURA SHOWER MIXER



CONSTRUCTION: Brass body

CARTRIDGE TYPE: 47 mm ceramic cartridge with Hyperflow™ technology

CLASSIFICATION: Suitable for **equal low** systems

INLET CONNECTIONS: 1/2" BSP Male

OPTIMUM WORKING PRESSURE: 25 - 500kPa

DIMENSIONS FOR FITTING: see installation guide

OPERATING TEMPERATURE: 5 °C - 80 °C

- Big ports, big cartridge - 10mm inlet/15mm outlet
- Increased flow rate of 20% at 40°C on 20 kPa
- Equal Low applications for shower mixer and bath filler
- Large 140mm diameter metal faceplate
- Concealed screws to positively fasten faceplate
- Positive seal between the faceplate and the body
- Clear but discreet hot and cold indication

FTHFSCP

Chrome

<http://www.methven.com/nz/>