

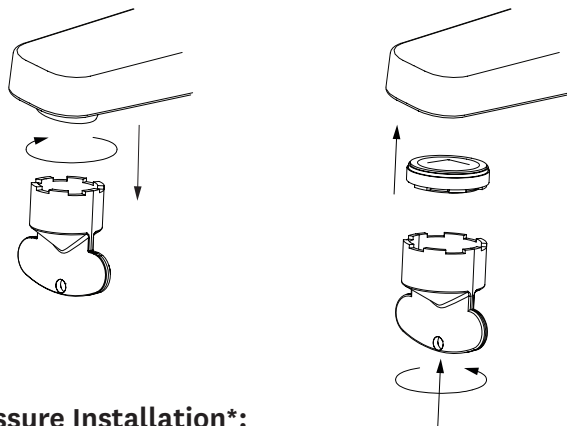
## Equal High Pressure (Mains) Installation:

Install mixer as supplied

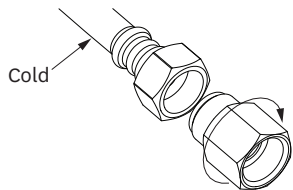
## Unequal Pressure and Equal Low Pressure Installation\*:

Remove flow restricted (green) aerator using cache key.

Replace with unrestricted (blue) aerator.



## Unequal Pressure Installation\*:



Install the brass nipple into the cold inlet hose.

\*Note: Unrestricted aerator and brass nipple not included in some regions.

## Care and Cleaning:

Never use abrasives or abrasive cleaning agents to clean this product. Clean regularly with contamination free warm soapy water and a damp soft cloth.

Periodically the stream shaper should be removed as shown above and cleaned under running water.

Methven warrants this product against manufacturing defects and that it is suitable for use under the general operating conditions specified in this instruction sheet. However, regional regulations apply and may affect our warranty. Please refer to [www.methven.com](http://www.methven.com) or call customer service for full details.

New Zealand  
0800 804 222

Australia  
13 14 16

UK  
0800 195 1602

# WAIPORI SINK MIXER INSTALLATION GUIDE

## TECHNICAL SPECIFICATIONS

### Operating Pressure:

Min 35kPa, Max 1000kPa.

Recommended 35kPa - 500kPa.

Recommended installation of a pressure limiting valve if supply exceeds 500kPa.

### Operating Temperature:

Hot: Max 70°C.

Cold: Min 5°C.

AS/NZS 3500 requires all hot water supplies to any sanitary fitting to be tempered to 50°C

### Inlet Connections:

All 1/2" BSP.

This product complies with the Lead Free requirements of the National Construction Code Volume Three.

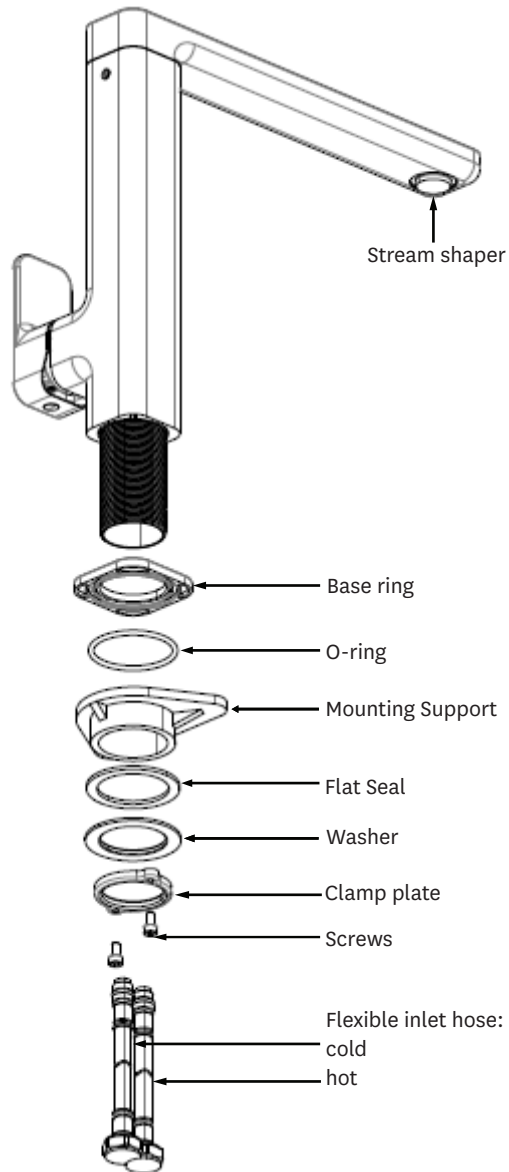
\* Regional specific regulations apply. Please refer to your warranty statement at [www.methven.com](http://www.methven.com)



**METHVEN**  
[www.methven.com](http://www.methven.com)

# IMPORTANT

Please read all of the instructions before installation



## General:

- 1) Methven recommends this product is installed by a licensed plumber in compliance with all relevant regional regulations.
- 2) Do not hydrostatic test the installation with this mixer installed. Damage to the ceramic cartridge may occur.
- 3) All pipe work must be thoroughly flushed prior to the installation of the mixer.
- 4) In-line filters must be fitted on both hot and cold supplies to prevent foreign particles damaging the ceramic cartridge.
- 5) Do not remove the ceramic cartridge from the mixer when installing.
- 6) After installation all connections must be checked for leaks.
- 7) This mixer is not recommended for use in uncontrolled heating systems such as wet-backs or solar heating units unless a suitable tempering valve is fitted.
- 8) If limited water flow is experienced, locate aerator and filter washers and clean away foreign material as required.

## IMPORTANT:

It is the responsibility of the installer to ensure a waterproof seal is achieved between the product and mounting surface.

It is crucial to ensure that a tap is properly sealed to a work surface to prevent leaks and water damage. Failure to do so can result in water leakage, potential damage to the work surface, and other related issues. It is recommended to follow the manufacturer's instructions and use an appropriate sealant to ensure a secure and watertight seal between the tap and the work surface. If you are unsure about the installation process, it is advisable to seek professional assistance to avoid any potential issues.

## Installation:

- 1) Cut a single hole minimum 34mm/ maximum 36mm diameter into the mounting surface.
- 2) Connect both flexible hoses to the mixer. Insert o-ring into the groove in the bottom of the base ring.
- 3) Feed the mixer hoses and Tap through the hole
- 4) Fit washer together with flat seal over threaded tube of tap as shown. Screw clamp ring onto threaded tube until it contacts washer & the flat seal has contacted the underside of the deck. Tighten two screws using a 3mm allen key until mixer assembly is clamped firmly to the deck.  
**DO NOT OVERTIGHTEN.**
- 5) Connect the flexible hoses to the hot and cold supplies (hot on the left, cold on the right).

