

WAIPORI ULTRA SHOWER MIXER

INSTALLATION GUIDE

TECHNICAL SPECIFICATIONS

Operating Pressure:

Min 150kPa, Max 1000kPa.

Recommended 150-500kPa.

Recommended installation of a pressure limiting valve if supply exceeds 500kPa.

Operating Temperature:

Hot: Min 50°C (at mixer), Max 70°C.

Cold: Min 5°C.

AS/NZS 3500 requires all hot water supplies to any sanitary fitting to be tempered to 50°C

Inlet Connections:

All ½" BSP.



Care and Cleaning:

Never use abrasives or abrasive cleaning agents to clean this product. Clean regularly with contamination free warm soapy water and a damp soft cloth.

Methven warrants this product against manufacturing defects and that it is suitable for use under the general operating conditions specified in this instruction sheet. However, regional regulations apply and may affect our warranty. Please refer to www.methven.com or call customer service for full details.

New Zealand
0800 804 222

Australia
13 14 16

UK
0800 195 1602

IMPORTANT

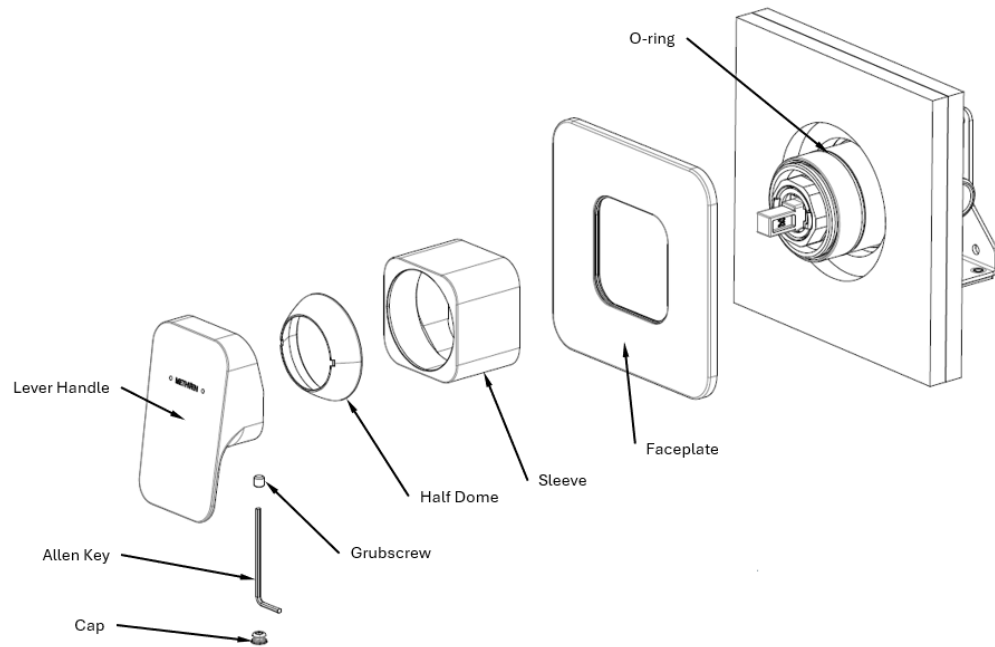
Please read all of the instructions before installation

Avoid restrictive piping, fittings or sharp angled bends when plumbing the mixer.

Do not hydrostatic test the installation with this mixer installed. Damage to the ceramic headworks may occur.

All pipe-work must be thoroughly flushed prior to installation of the mixer. In-line filters must be installed on both hot and cold supplies to prevent foreign particles damaging the ceramic headworks.

NOTE: It is the responsibility of the installer to ensure a water proof seal is achieved between the faceplate and finished surface of the wall. If in any doubt about the quality of the seal the faceplate seal should be removed and then reinstalled using silicon to ensure a seal is achieved.



Installation

- Remove protection cap from the mixer body and make sure the external surface of the mixer body is clean.
- Apply lubricant to the o-ring on the mixer body, then slide the sleeve over the mixer body up to the shoulder.
- Screw half dome onto the sleeve and hand tighten to secure the sleeve.
- Apply a suitable clear sealant to the back of the faceplate leaving a small unsealed section at the bottom for drainage. Carefully slide the faceplate including the faceplate seal over the mixer body sleeve. TIP: wet faceplate seal before fitting over the sleeve.
- Press the faceplate firmly against the wall/tiled face, Wipe/clean any excess sealant from the trim surfaces & the wall/tile face.
- Fit Lever Handle taking care that it is pushed fully onto the cartridge stem, then tighten grub screw using the 2.5mm Allen Key, **DO NOT OVER TIGHTEN.**
- Fit plug taking care not to damage the decorative finish.
- Turn on the Hot and Cold water supply and check mixer operation.

