

* Regional specific regulations apply. Please refer to your warranty statement at www.methven.com

Inlet Connections:
All 1/2" BSP
tempered to 50°C.
AS/NZS 3500 requires all hot water supplies to any sanitary fitting to be

Operating Temperature:
Hot: Min 50°C (at mixer), Max 70°C
Cold: Min 5°C
limiting valve must be installed.

Operating Pressure:
Unequal Pressure:
Hot: Min 17kPa
Cold: Min 30kPa
Equal Pressure:
Min 35kPa

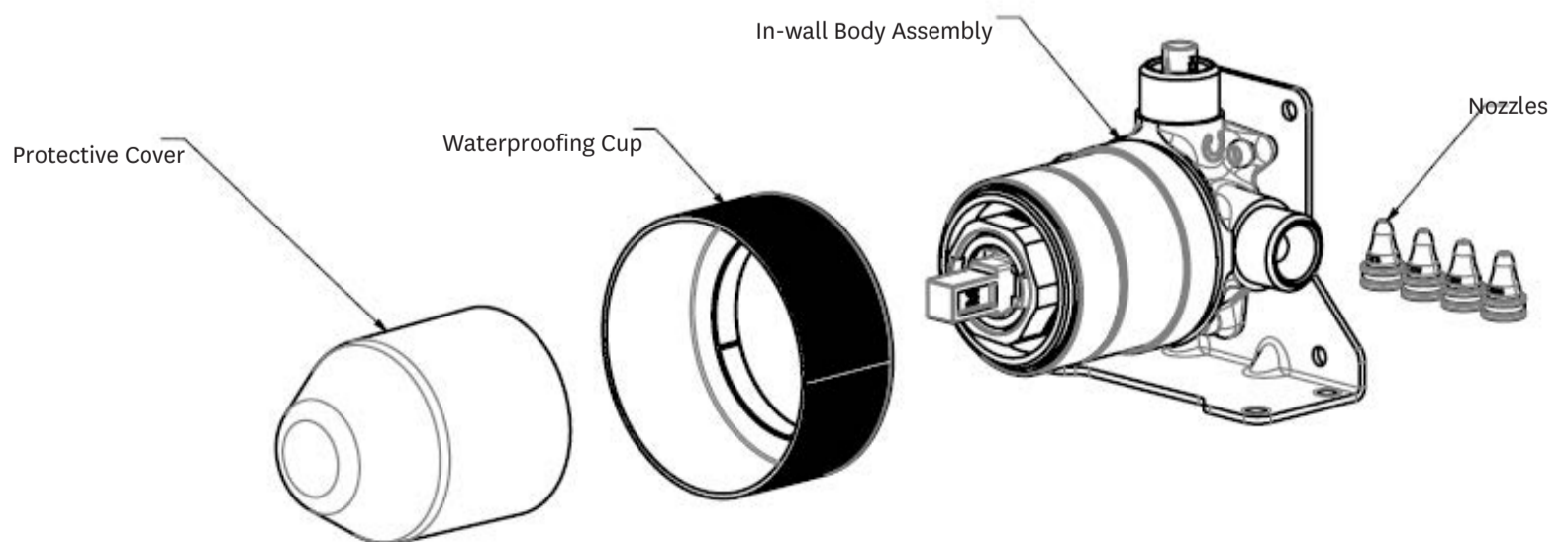
Technical Specifications:
If supply exceeds 50kPa a pressure limiting valve must be installed.

UNIVERSAL IN-WALL BODY SHOWER MIXER WITH FASTFLOW II Installation Guide

IMPORTANT: Please read all of the instructions before installation.

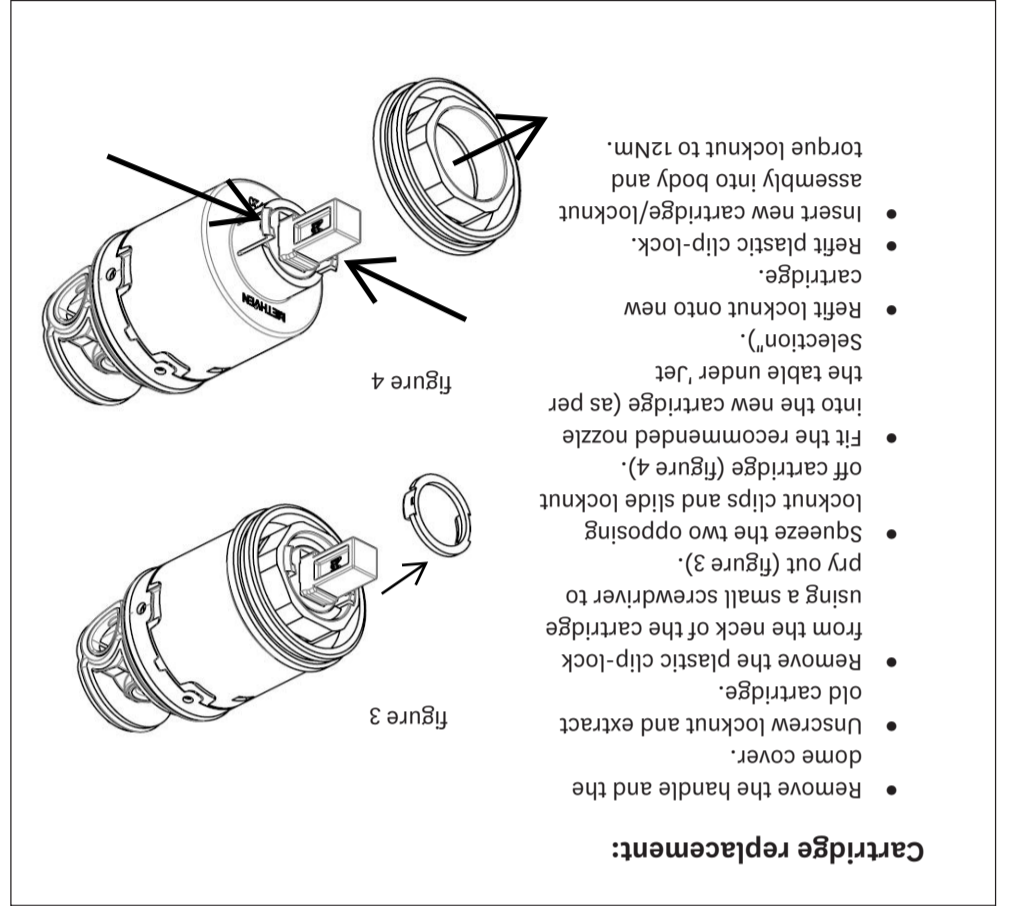
General:

- Methven recommends this product is installed by a licensed plumber in compliance with all relevant regional regulations.
- All pipe work must be thoroughly flushed prior to the installation of the mixer.
- In-line filters must be fitted on both hot and cold supplies to prevent foreign particles damaging the ceramic cartridge.
- After installation all connections must be checked for leaks.
- All outlets used primarily for personal hygiene shall deliver water at a safe temperature as per regional regulations.
- This mixer is not recommended for use in uncontrolled heating systems such as wet-backs or solar heating units unless a suitable tempering valve is fitted.
- It is the responsibility of the installer to ensure a waterproof seal is achieved between the product and wall substrate using a natural cure silicone sealant.



Methven warrants this product against manufacturing defects and that it is suitable for use under the general operating conditions specified in this instruction sheet. However, regional regulations apply and may affect your warranty. Please refer to www.methven.com or call customer service for full details.

Care and Cleaning:
Never use abrasives or abrasive cleaning agents to clean this product. Clean regularly with contamination free warm soapy water and a damp soft cloth.



Cartridge replacement:

- Remove the handle and the dome cover.
- Unscrew locknut and extract old cartridge.
- Remove the plastic clip-lock from the neck of the cartridge using a small screwdriver to pry out (figure 3).
- Squeeze the two opposing locknut clips and slide locknut off cartridge (figure 4).
- Fit the recommended nozzle into the new cartridge (as per the table under 'Jet Selection').
- Refit locknut onto new cartridge.
- Refit plastic clip-lock.
- Insert new cartridge/locknut assembly into body and torque locknut to 12Nm.

JET SELECTION:

Equal Pressure Systems

Fit mixer as supplied.

Unequal Pressure Systems

If the system is supplied by a pressure pump, ensure that the pump can maintain 300kPa at the cold Inlet. If not, install a low pressure cold feed and install the mixer as if for a low pressure equal system.

Use the following table to determine the nozzle to be used.

Hot Pressure	Primary Nozzle
17-25 kPa	Black
25-50 kPa	Green
50-90 kPa	Yellow
90-130 kPa	Red

Fitment of the primary nozzle into the mixer body

- Remove the handle and dome cover, then unscrew the lock nut.
- Unscrewing the locknut will automatically extract the cartridge from the mixer body (figure 1).
- Fit the recommended nozzle (as per table) into the cartridge as shown (figure 2).
- Refit the cartridge, ensuring that the 2 outer seals are in place. Torque the locknut to 12 Nm. Refit the dome cover and the handle.

figure 1

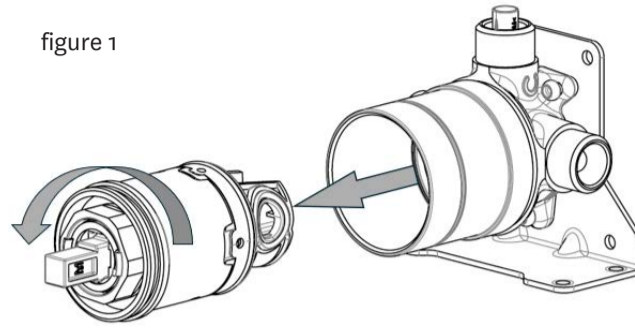
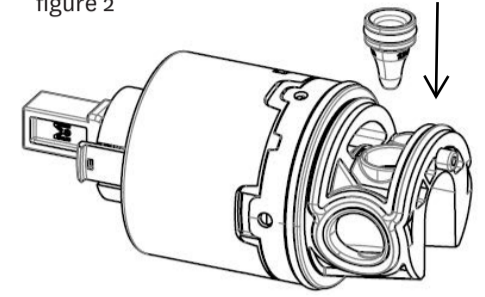


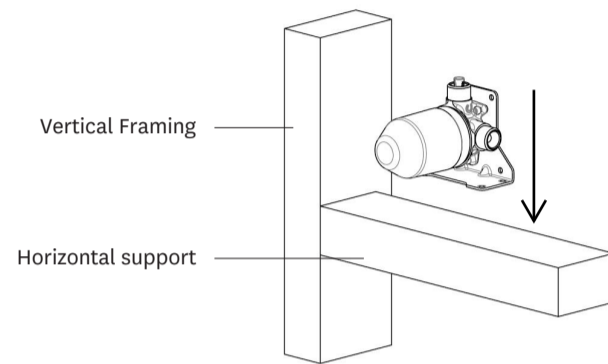
figure 2



IMPORTANT: Before you begin, turn off the water supply.

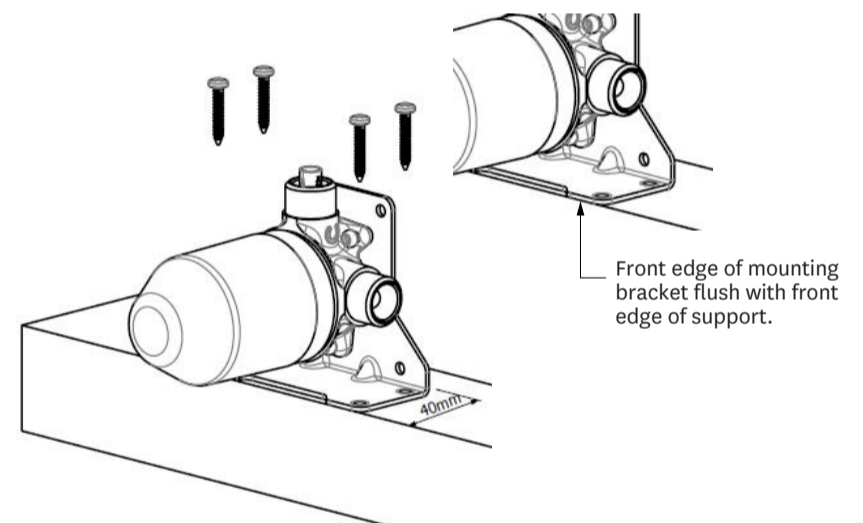
Step 1

- Refer to section above for correct nozzle selection.
- **Install a horizontal support at the required height for correct positioning of the mixer. Ensure front of horizontal support is in line with front of the framing.**



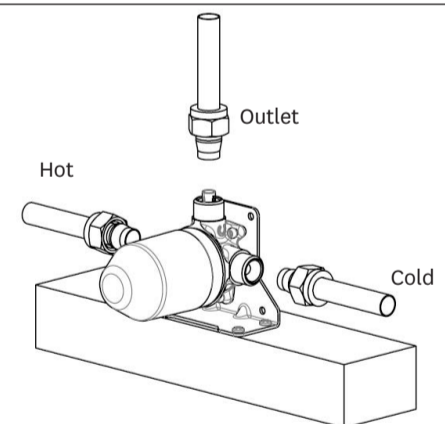
Step 2

- Remove waterproofing cup from mixer by sliding off (protective cover can remain on mixer barrel throughout installation).
- Position mixer body on horizontal support with the front edge of the mounting bracket flush with front of the horizontal support.
- Secure mixer body to the horizontal support with four suitable screws, ensuring it is oriented square.
- Alternatively, the mixer can be mounted to support timber behind the mixer maintaining the same placement as above.



Step 3

- Flush all pipe-work thoroughly prior to the next step.
- Connect hot and cold supplies and outlet to mixer body ensuring a good seal at each joint.
- Leak test installation prior to closing wall cavity.
- The seal integrity of pipe joints is the responsibility of the installing plumber.



Step 4

- Wall lining hole should be cut or finished as per the dimension shown in the diagram on the right.
- Refit waterproofing cup to mixer, pushing it all the way home.
- Apply sealant between waterproof cup and wall substrate and between inside of waterproof cup and mixer body flange.
- Apply waterproof membrane to substrate wall, sealing onto the waterproofing cup.
- Install finished wall lining up to waterproof cup and trim excess protruding cup off flush with wall finish surface.

Apply sealant between substrate and waterproofing cup and inside between waterproofing cup and body.

