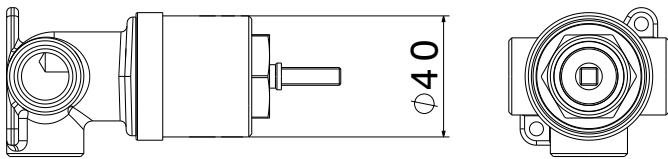
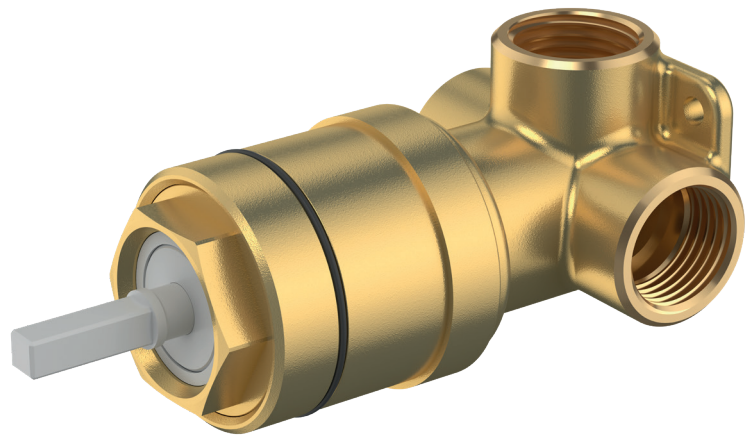


UNIVERSAL IN-WALL BODY DIVERTER



CONSTRUCTION: Brass

CLASSIFICATION: Suitable for **mains/high pressure** only

INLET CONNECTIONS: 1/2" BSP female

OUTLET CONNECTION: N/A

WORKING PRESSURES: 150 - 500kPa

DIMENSIONS FOR FITTING: N/A

OPERATING TEMPERATURE: 5°C - 80°C

- In-wall breach assembly for ease of installation
- Suitable for water pressure between 150-500 kpa

UIB-D

Female - Inlet connection

THE METHVEN GUARANTEE. For total peace of mind, all domestic tapware products include a 20 Year Parts and Labour Guarantee. For commercial installations, a 5 Year Guarantee on Parts and Labour applies. For full terms and conditions, visit www.methven.com.