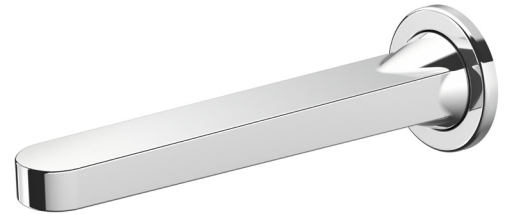
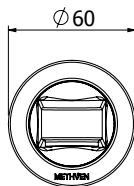
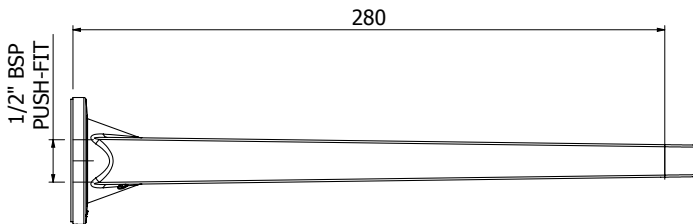
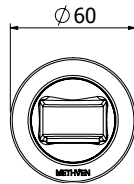
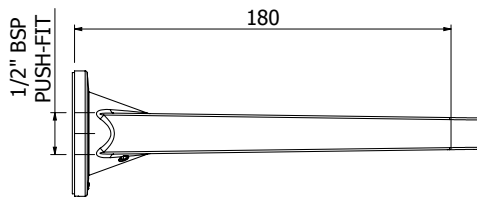
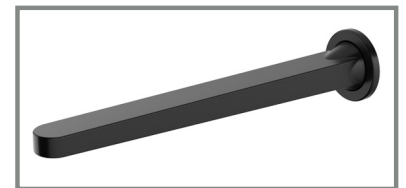


03-9838M - 200MM
03-9845M - 300MM
SOFT SQUARE BATH SPOUT



300mm also available in
MATTE BLACK FINISH



FINISH: Chrome

CONSTRUCTION: Cast Brass

CARTRIDGE TYPE: -

SUPPLY: Mains Pressure

CONNECTIONS: 1/2" BSP Female - Push-fit

WORKING PRESSURES: 150 - 500 kpa

OPERATING TEMPERATURE: 5°C to 70°C*

*Refer AS/NZS 3500

- Solid cast brass spout for longevity
- inlet - 1/2" BSP female push-fit connection
- Flush mounted aerator with slim stream flow director
- Suitable for use with Glide or Spirit tapware range (*sold separately*)
- 200mm and 300mm bath spout length options available (*sold separately*)
- Suitable for mains pressure installation.
- WELS rating not required
- Also available in Matte Black finish (*300mm bath spout 03-9845MBK*)