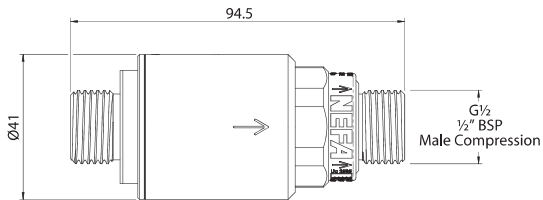
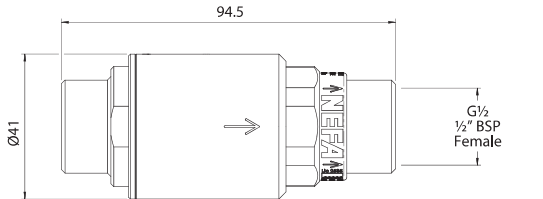


SPECIFICATIONS

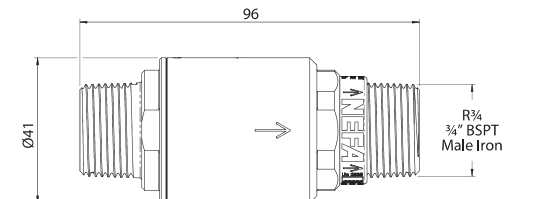
- Connections for PLV350M, PLV500M and PLV600M: 15mm (1/2" BSP) male compression inlet and outlet.
- Connections for PLV350F, PLV500F and PLV600F: 15mm (1/2" BSP) female inlet and outlet.
- Connections for PLV350MC20, PLV500MC20 and PLV600MC20: 20mm (3/4" BSP) male compression inlet and outlet.
- Connections for PLV350M20, PLV500M20 and PLV600M20: 20mm (3/4" BSPT) male taper inlet and outlet.
- Complies with AS1357.2
- Factory set to supply 350kPa, 500kPa or 600kPa down stream pressure.
- Maximum temperature: 80°C.
- Maximum inlet pressure: 2000kPa.
- Flow rates at 700kPa as follows:-
 PLV350M and PLV350F = 65 litres/min
 PLV500M and PLV500F = 75 litres/min
 PLV600M and PLV600F = 80 litres/min
 PLV350MC20 and PLV350M20 = 120 litres/min
 PLV500MC20 and PLV500M20 = 120 litres/min
 PLV600MC20 and PLV600M20 = 120 litres/min



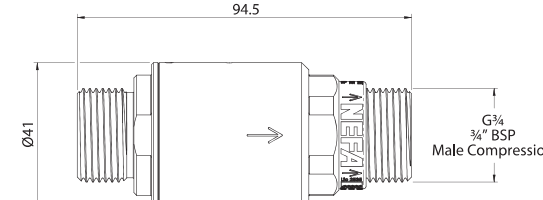
PLV350M
PLV500M
PLV600M



PLV350F
PLV500F
PLV600F



PLV350M20
PLV500M20
PLV600M20



PLV350MC20
PLV500MC20
PLV600MC20

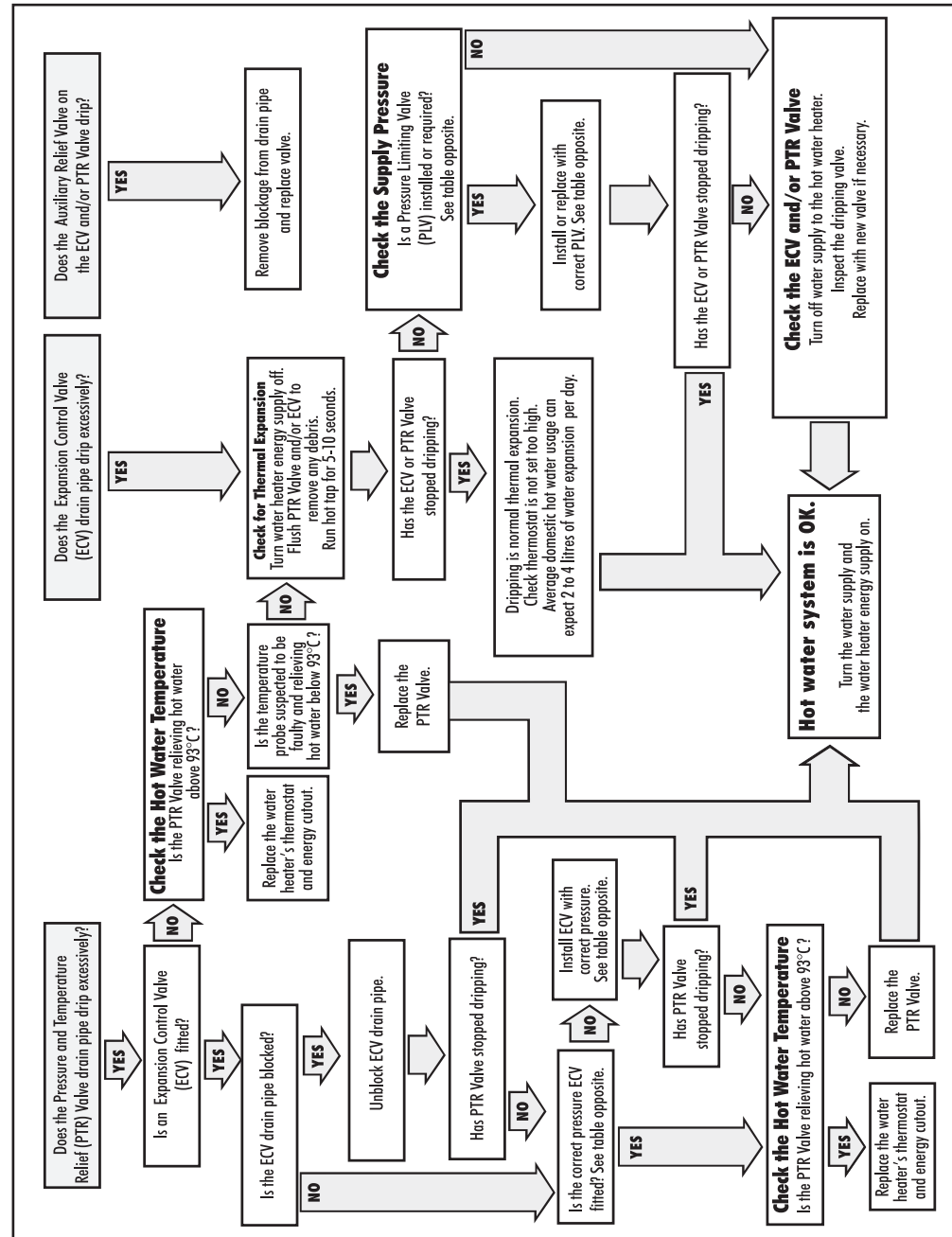
INSTALLATION

- NEFA valves should always be installed by a licensed plumber in accordance with National Plumbing and Drainage Code AS3500.4. The installation must also comply with any Local Authority requirements.
- Suitable for vertical or horizontal installation.
- Install with the direction of flow in line with the arrow on the valve body.
- Install the PLV at the entry to the household and after the Non Return Isolation Valve.
- Install a Line Strainer Valve upstream of the PLV.
- The valve should be installed where it can be easily accessed.
- The valve must not be buried in the ground or installed in a situation where it could be subject to freezing.
- Never expose valves to a torch flame or heat. Heat will destroy the seals and sealing parts.

VALVE RATING GUIDE

PLV Colour Indication	With Expansion Control Valve				Without Expansion Control Valve	
	PTR Valve rating kPa	ECV Valve rating kPa	PLV required if mains pressure exceeds kPa	Pressure Limiting Valve rating kPa	PLV required if mains pressure exceeds	Pressure Limiting Valve rating kPa
• 350kPa Yellow	850	700	550	350	680	500
• 500kPa White	1000	850	680	500	800	600
• 600kPa Blue	1400	1200	960	600	1120	600

TROUBLESHOOTING FOR NEFA HOT WATER SYSTEMS



Warranty Return Form



We would like to process your warranty quickly. Please assist us by taking a minute to check that the information is correctly filled out in the form below. Ensure this form is returned with the faulty product to your plumbing merchant or to NEFA Australia.

Product details

Product Code / Model Number Date of installation Date of manufacture (on valve)

Tell us the about the fault; refer to the back of this page.

How can we contact You?

Your Business' Name Installer's License Number

Contact Name
 First Name Surname

Contact Details
 Street Number & Name Phone Number
 Suburb Fax Number
 City / Town email
 State Post Code

Where was the product installed?

Contact Name
 First Name Surname

Site Details
 Street Number & Name Phone Number
 Suburb Fax Number
 City / Town email
 State Post Code

Warranty Return Form

NEFA

Warranty Form Installation Details

Identify Problem (Please Tick) ✓

- Valve leaks
- Water hammer
- Noisy valves
- Valve failed
- Insufficient water flow (measure flow of valve litres/minute)
- Pressure Limiting Valve is not limiting pressure (state outlet pressure kPa)
- Tempering Valve does not regulate temperature between 35°C and 55°C.
- Tempering Valve does not limit temperature to 55°C.

Further Details

.....

.....

.....

Was faulty valve replaced? Yes No If yes: Brand Model

Did this fix the problem? Yes No

Tick Valves Fitted ✓
Fill out brand and model specs.
Draw in pipelines, mark bends, elbows and T's with an 'X'.
Indicate pipe sizes.

Line Strainer
Brand: _____
Model: _____

Pressure & Temperature Relief Valve
Brand: _____ Pressure: _____
Model: _____ Drain pipe size: _____
Length: _____ No. of bends: _____

Supply Pressure
_____ kPa

Tempering Valve
Brand: _____
Model: _____

Stop Cock
Brand: _____
Model: _____

Line Strainer
Brand: _____
Model: _____

Non-Return Isolating Strainer Valve
Brand: _____
Model: _____

Non-Return Isolating Valve
Brand: _____
Model: _____

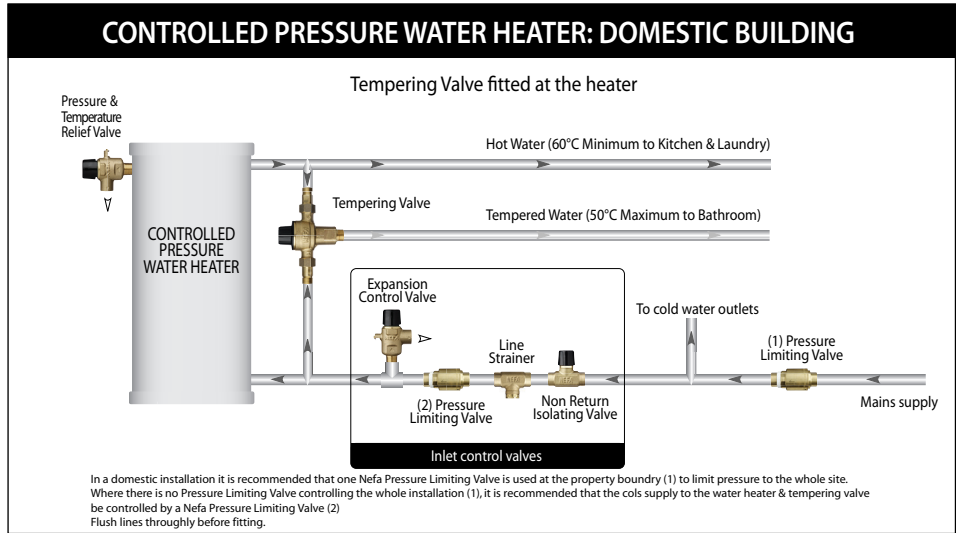
Pressure Limiting Valve
Brand: _____ Pressure: _____
Model: _____

Non-Return Valve
Brand: _____
Model: _____

Expansion Control Valve
Brand: _____
Model: _____
Pressure: _____
Length: _____
Drain pipe size: _____
No. of bends: _____



NEFA



Diagrams for illustrative purposes only

Warranty Statement – NEFA Australia

The following warranty statement shall apply to all NEFA valve products supplied by NEFA Australia.

Where NEFA valves are installed in a suitable, commercial or domestic application, in addition to any other right or remedy which the purchaser or end user may have under any relevant consumer protection legislation, Methven Australia, or any of its subsidiaries, undertake to replace any NEFA brand valve deemed to be faulty by a licensed plumber.

Further, if any NEFA valve submitted for warranty is found to contain a material defect which arose in the course of manufacture or does not satisfy the relevant Australian Standards and/or New Zealand Standards product requirements upon testing, the claimant (licensed plumber) will be reimbursed \$50 (See Note 1.)

These undertakings will only apply if:

1. The product was installed by a licensed plumber
2. The warranty claim form is completed in its entirety
3. The product was installed as described in the installation instructions supplied with every NEFA product
4. The product is installed in accordance with the relevant Australian Standards and Plumbing Codes
5. The product was installed as described within the limits of the product specifications supplied with every NEFA product
6. The product has not been tampered with or repaired in any way
7. The product has not been damaged by misuse, accident or neglect
8. The product does not contain excessive debris
9. The product is installed in the specific Country where the original purchase was made
10. The product is submitted to NEFA Australia within 5 years from the date of manufacture. (See Note 2)

Note 1. Upon submitting a NEFA valve to NEFA Australia for warranty claim purposes, the valve will be tested by Methven Ltd in accordance with the relevant AS/NZS product standard. If the valve does not meet the requirements of the product standard, the claimant (licensed plumber) will be reimbursed to a maximum of \$50 (incl. GST).

Note 2 The date of manufacture is marked on the valve, represented by a five digit number. The first two digits of the date of manufacture refer to the last two digits of the year of manufacture. The remaining three digits refer to the numerical day of the year in which the valve was manufactured (example: 30th June 2007 would be represented as 07181).

Methven shall in no way be liable to the purchaser or end user of any NEFA valves for any loss, damage (direct, indirect or consequential), cost or expense suffered or incurred by that person (including, without limitation, any damage and/or labour charges incurred in installation, repair or replacement), other than as provided in the above provisions, under any relevant consumer protection legislation or as consented to by Methven in writing in advance.

METHVEN

Made in New Zealand by Methven Limited,
Private Bag 19996, Avondale, Auckland, NZ.

CUSTOMER SERVICE

Phone: 1300 638 483
Website: www.nefa.com.au

NEFA

PRESSURE LIMITING VALVE



- Protection for taps pipework and appliances from high supply pressures.
- Superior flow rate.
- Patented design.
- WaterMark certified.
- Complies with AS1357.2.
- Maximum inlet pressure 2000 kPa
- Maximum temperature 80° C.
- Available in 15mm (1/2") and 20mm (3/4") versions.

