

## SPECIFICATIONS

- Inlet: 1/2" BSPT Tapered Male Thread
- Drain: 1/2" BSP Parallel Female Thread
- Pressure Settings: Factory Set at 700kPa, 850kPa & 1200kPa
- Rated Capacity: 20kW
- Auxiliary Relief Valve Pressure: 500 – 935kPa

## INSTALLATION

- NEFA valves should always be installed by a licensed plumber in accordance with National Plumbing and Drainage Code AS3500.4. The installation must also comply with any Local Authority requirements and the water heater manufacturer's requirements.
- The Expansion Control Valve must be fitted vertically or horizontally to a tee on the cold water inlet line to the water heater. There must be no other valve between the Expansion Control Valve and the inlet connection to the water heater.
- Ensure the set pressure and energy rating on the valve indicator disc matches the water heater's rating.
- Ensure flushing handle is accessible.
- Install DN15 drain line in accordance with AS3500.4
- Check the inlet water pressure does not exceed the maximum stated in the table below. Install PLV as required.
- Energy efficiency requirements in AS/NZS 3500 require that relief valves fitted to water heaters be thermally insulated. Suitable insulation complying with the requirements and designed to fit NEFA relief valves can be purchased separately through your plumbing merchant. **IMPORTANT:** Insulation shall be installed to cover the maximum surface area of the valve without impeding operation of the valve or obstructing the auxiliary relief device.

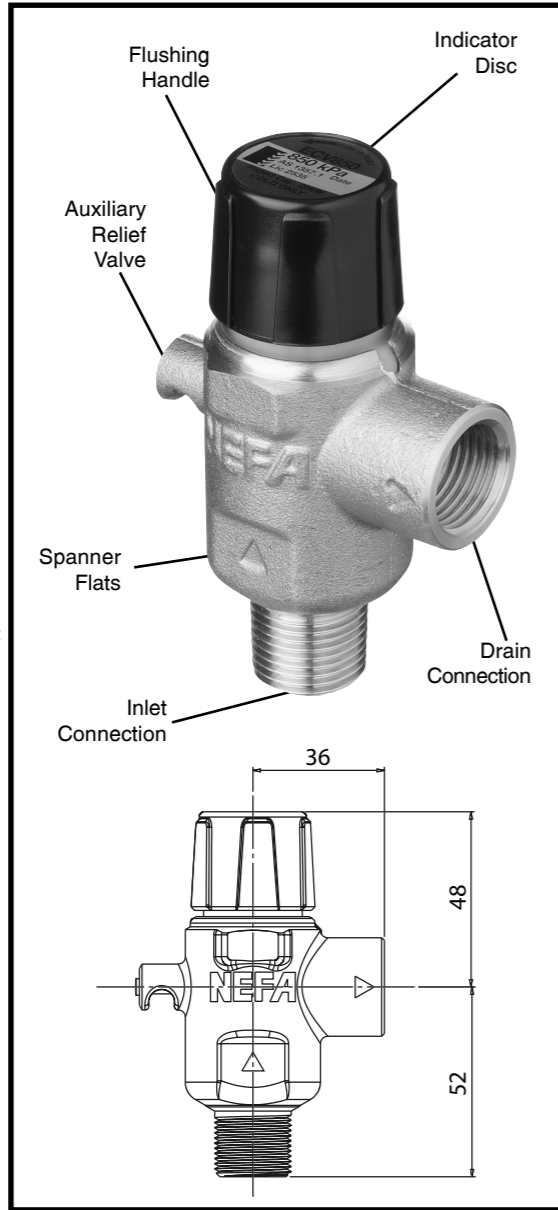
## OPERATION

- The Expansion Control Valve is designed to relieve excess pressure caused by water expanding during the heating cycle. It is NORMAL for the Expansion Control Valve to release water during the heating cycle.
- Fitting an Expansion Control Valve to a hot water system will prolong the life of the PTR valve and the water heater.
- Flush the Expansion Control Valve every six months to clear deposits from around the valve seat.
- The Expansion Control Valve cannot be adjusted or serviced.

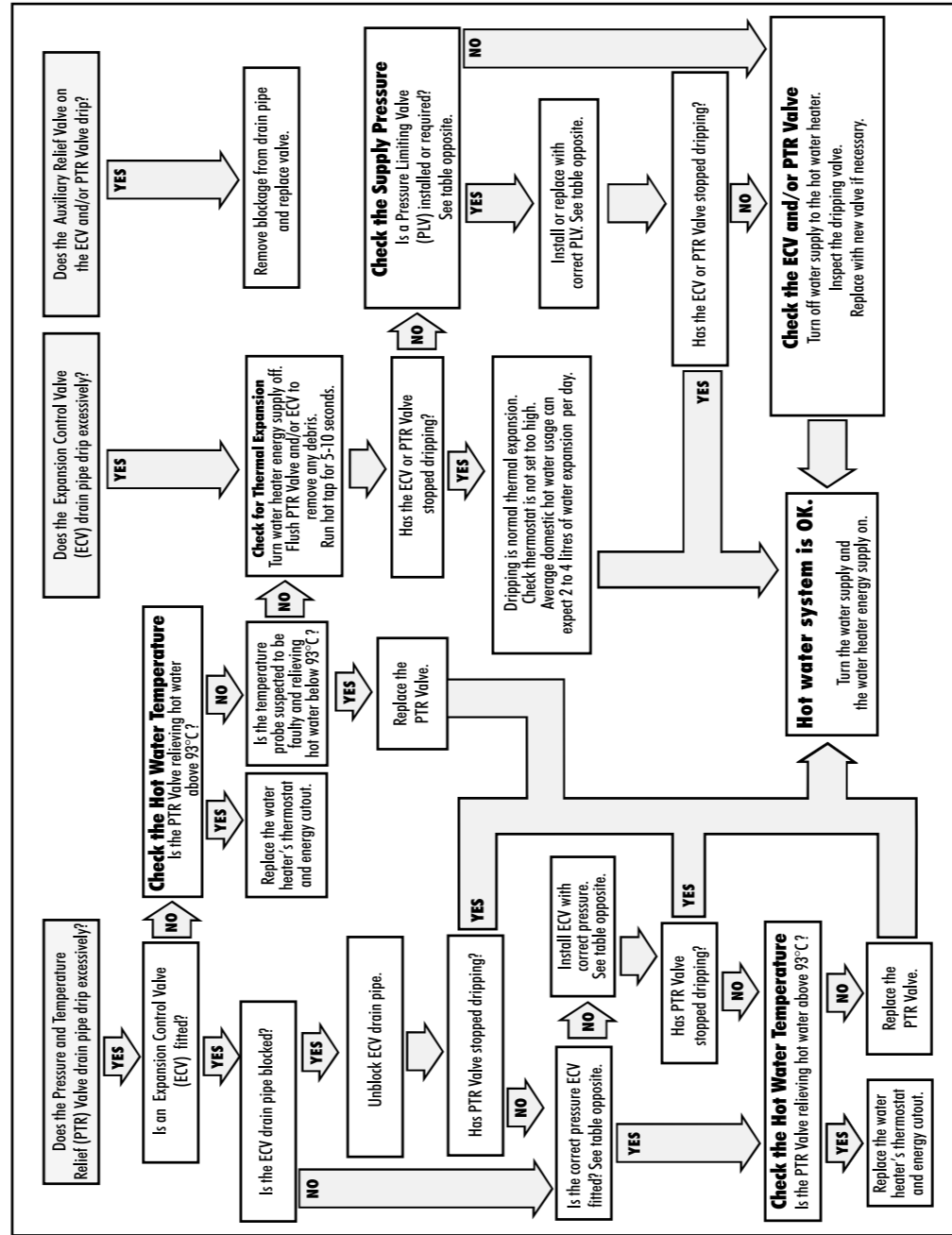
NEVER USE AN EXPANSION CONTROL VALVE AS A REPLACEMENT FOR A PRESSURE TEMPERATURE RELIEF VALVE.

## VALVE RATING GUIDE

PTR & ECV Colour Indication	With Expansion Control Valve				Without Expansion Control Valve	
	PTR Valve rating kPa	ECV Valve rating kPa	PLV required if mains pressure exceeds kPa	Pressure Limiting Valve rating kPa	PLV required if mains pressure exceeds kPa	Pressure Limiting Valve rating kPa
Blue Disc	850	700	550	350	680	500
Green Disc	1000	850	680	500	800	600
Red Disc	1400	1200	960	600	1120	600



## TROUBLESHOOTING FOR NEFA HOT WATER SYSTEMS



## Warranty Return Form

We would like to process your warranty quickly. Please assist us by taking a minute to check that the information is correctly filled out in the form below. Ensure this form is returned with the faulty product to your plumbing merchant or to NEFA Australia.

### Product details

Product Code / Model Number  Date of installation  Date of manufacture (on valve)

Tell us the about the fault; refer to the back of this page.

### How can we contact You?

Your Business' Name  Installer's License Number

Contact Name  
First Name  Surname

Contact Details  
Street Number & Name  Phone Number   
Suburb  Fax Number   
City / Town  email   
State  Post Code

### Where was the product installed?

Contact Name  
First Name  Surname

Site Details  
Street Number & Name  Phone Number   
Suburb  Fax Number   
City / Town  email   
State  Post Code

# NEFA NEW INSTALLATION AND WARRANTY RETURN FORM

THIS FORM MUST BE FILLED OUT IN FULL AND RETURNED TO NEFA WITH THE FAULTY VALVE OR YOUR CLAIM WILL NOT BE PROCESSED.

## Identify Problem (Please Tick) ✓

- Valve leaks
- Water hammer
- Noisy valves
- Valve failed
- Insufficient water flow (measure flow of valve . . . . . litres/minute)
- Pressure Limiting Valve is not limiting pressure (state outlet pressure . . . . . kPa)
- Tempering Valve does not regulate temperature between 40°C and 50°C.
- Tempering Valve does not limit temperature to 50°C.

## Further Details

.....  
 .....  
 .....

Was faulty valve replaced?  Yes  No If yes: Brand . . . . . Model . . . . .

Did this fix the problem?  Yes  No

**Tick Valves Fitted** ✓  
 Fill out brand and model specs.  
 Draw in pipelines, mark bends, elbows and T's with an 'X'.  
 Indicate pipe sizes.

**Line Strainer**  
 Brand: \_\_\_\_\_  
 Model: \_\_\_\_\_

**Pressure & Temperature Relief Valve**  
 Brand: \_\_\_\_\_  
 Model: \_\_\_\_\_  
 Pressure: \_\_\_\_\_  
 Drain pipe size: \_\_\_\_\_  
 Length: \_\_\_\_\_  
 No. of bends: \_\_\_\_\_

Hot Water ←

Temperature Controlled Water ←

Supply Pressure \_\_\_\_\_ kPa

**Tempering Valve**  
 Brand: \_\_\_\_\_  
 Model: \_\_\_\_\_

Hot Water Cylinder

Brand: \_\_\_\_\_  
 Model: \_\_\_\_\_

**Stop Cock**  
 Brand: \_\_\_\_\_  
 Model: \_\_\_\_\_

**Line Strainer**  
 Brand: \_\_\_\_\_  
 Model: \_\_\_\_\_

**Non-Return Isolating Strainer Valve**  
 Brand: \_\_\_\_\_  
 Model: \_\_\_\_\_

**Non-Return Isolating Valve**  
 Brand: \_\_\_\_\_  
 Model: \_\_\_\_\_

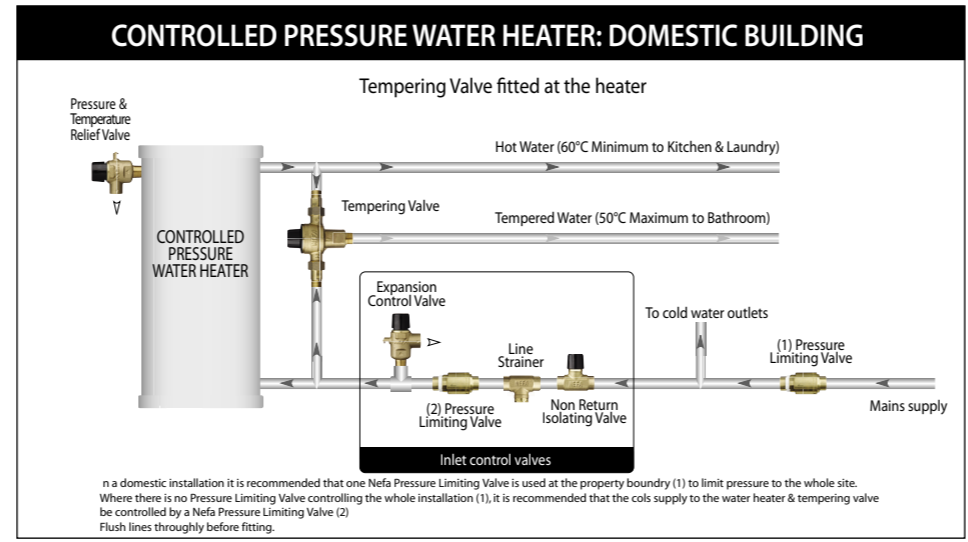
**Pressure Limiting Valve**  
 Brand: \_\_\_\_\_  
 Model: \_\_\_\_\_  
 Pressure: \_\_\_\_\_

**Non-Return Valve**  
 Brand: \_\_\_\_\_  
 Model: \_\_\_\_\_

**Expansion Control Valve**  
 Brand: \_\_\_\_\_  
 Model: \_\_\_\_\_  
 Pressure: \_\_\_\_\_  
 Drain pipe size: \_\_\_\_\_  
 Length: \_\_\_\_\_  
 No. of bends: \_\_\_\_\_



# NEFA



## Warranty Statement – NEFA Australia

Diagrams for illustrative purposes only

The following warranty statement shall apply to all NEFA valve products supplied by NEFA Australia.

Where NEFA valves are installed in a suitable, commercial or domestic application, in addition to any other right or remedy which the purchaser or end user may have under any relevant consumer protection legislation, Methven Australia, or any of its subsidiaries, undertake to replace any NEFA brand valve deemed to be faulty by a licensed plumber.

Further, if any NEFA valve submitted for warranty is found to contain a material defect which arose in the course of manufacture or does not satisfy the relevant Australian Standards and/or New Zealand Standards product requirements upon testing, the claimant (licensed plumber) will be reimbursed \$50 (See Note 1.)

### These undertakings will only apply if:

1. The product was installed by a licensed plumber
2. The warranty claim form is completed in its entirety
3. The product was installed as described in the installation instructions supplied with every NEFA product
4. The product is installed in accordance with the relevant Australian Standards and Plumbing Codes
5. The product was installed as described within the limits of the product specifications supplied with every NEFA product
6. The product has not been tampered with or repaired in any way
7. The product has not been damaged by misuse, accident or neglect
8. The product does not contain excessive debris
9. The product is installed in the specific Country where the original purchase was made
10. The product is submitted to NEFA Australia within 5 years from the date of manufacture. (See Note 2)

Note 1. Upon submitting a NEFA valve to NEFA Australia for warranty claim purposes, the valve will be tested by Methven Ltd in accordance with the relevant AS/NZS product standard. If the valve does not meet the requirements of the product standard, the claimant (licensed plumber) will be reimbursed to a maximum of \$50 (incl. GST).

Note 2 The date of manufacture is marked on the valve, represented by a five digit number. The first two digits of the date of manufacture refer to the last two digits of the **year of manufacture**. The remaining three digits refer to the **numerical day of the year** in which the valve was manufactured (example: 30th June 2007 would be represented as 07181).

Methven shall in no way be liable to the purchaser or end user of any NEFA valves for any loss, damage (direct, indirect or consequential), cost or expense suffered or incurred by that person (including, without limitation, any damage and/or labour charges incurred in installation, repair or replacement), other than as provided in the above provisions, under any relevant consumer protection legislation or as consented to by Methven in writing in advance.

**CUSTOMER SERVICE**

**AUSTRALIA**  
 Phone 1300 638 483  
 Website: [www.nefa.com.au](http://www.nefa.com.au)

**CUSTOMER SERVICE**

**NEW ZEALAND**  
 Phone 0800 804 222  
 Website: [www.methven.com](http://www.methven.com)

METHVEN

Designed, distributed and warranted by Methven Limited, Private Bag 19996, Avondale, Auckland, NZ.

2 8 5 0 1 7 Issue F

# NEFA

## EXPANSION CONTROL VALVE



- Prevents damage to hot water systems by relieving excess pressure
- Stainless Steel Valve Seat.
- Easy to operate flushing mechanism
- Patented
- WaterMark certified
- Complies with AS1357.1.

