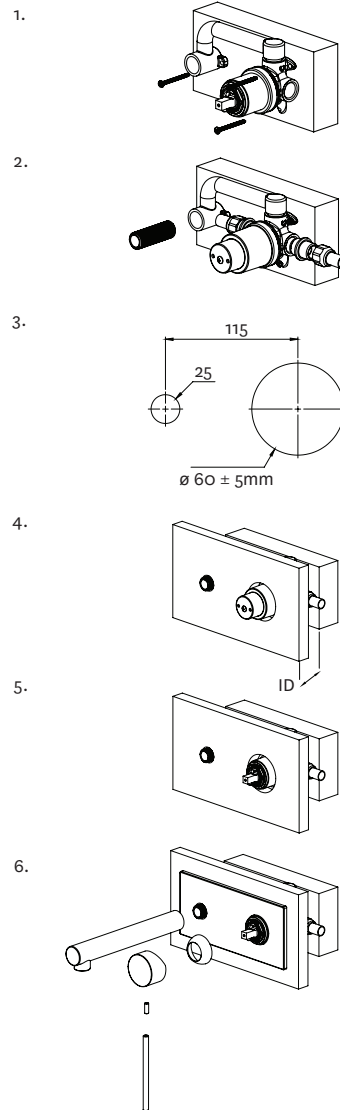


Installation

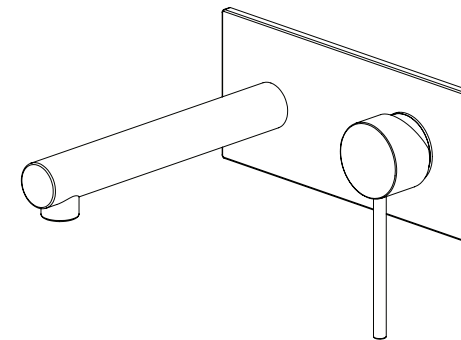
1. Leave protective cover in place.
2. Screw the body assembly (1) on to the mounting stud positioned to observe the installation depth, ID (to front of finished wall lining e.g. tiles) range as follows:
Range of Install Depth, ID = $62 \pm 12\text{mm}$
3. Connect body assembly (1) into system.
4. Cut holes in lining as pictured.
5. Trim the brass nipple to $15 \pm 2\text{mm}$ protruding from finished wall lining. Lubricate the o-ring in the faceplate (2). Place the faceplate (2) over the the body assembly (1) until flat on the finished wall surface. Remove protective cover prior to next step.
6. Screw on half dome (3). Fit handle (5) and fasten grub screw with hex key supplied. Screw on lever (6) onto grub screw in handle (5). Screw spout (4) on using Teflon tape or similar to ensure a seal.



Minimalist Plate Mount Basin Mixer Minimalist Plate Mount Bath Mixer

Basin: 01-2053

Bath: 01-2404



Installation Guide

IMPORTANT

Please read all of the instructions before installation

Use of this product is recommended for domestic and commercial applications. All pipework must be thoroughly flushed prior to the installation of the mixer. Inline filter washers must be installed on both hot and cold supplies to prevent foreign particles damaging the ceramic cartridge. Do not remove the ceramic cartridge from the mixer when installing.

Methven recommends a licensed plumber carry out all installations in compliance with the requirements of AS/NZS 3500. This product complies with AS/NZS 3718 regulations.



Applies to basin mixer only



MAY 2016

MA433098A Issue B

Methven Australia Pty Ltd

ABN 15 104 813 390
Melbourne, Australia
www.methven.com

www.methven.com

Customer Care Hotline: 1300 METHVEN (638 483)
Email: info@au.methven.com

Technical Specification

Inlet Connections:	All 1/2" BSP
Operating Pressure:	150kPa - 500kPa For optimum performance hot and cold water pressures should be equal. AS/NZS 3500 stipulates a 500kPa maximum operating pressure at any outlet within a building. Where normal pressure exceeds 500kPa, a pressure limiting valve must be installed.
Operating Temperature:	The basin mixer is rated at 7.5l/m. If limited water flow is experienced, locate stream shaper flow restricting device and filter washers and clean away foreign material as required. Recommended hot water supply 50°C, maximum 70°C. AS/NZS 3500 requires all hot water supplies to any sanitary fitting to be tempered to 50°C.
Ceramic cartridges:	Ceramic cartridge can be damaged due to the presence of the following within the water supply: Copper tube pieces Plastic pieces Sand, dirt or stones Thread tape Other objects not normally present in the potable water supplies

Piping Requirements for Mixers

Avoid restrictive piping, fitting or sharp angled bends when plumbing the mixer

Do not hydrostatic test* the installation with this mixer installed. Damage to the ceramic cartridge may occur.

Hydrostatic testing refers to placing the system under pressure, above the recommended operating pressure, to determine water tightness and to uncover leaks or weak joints within the system.

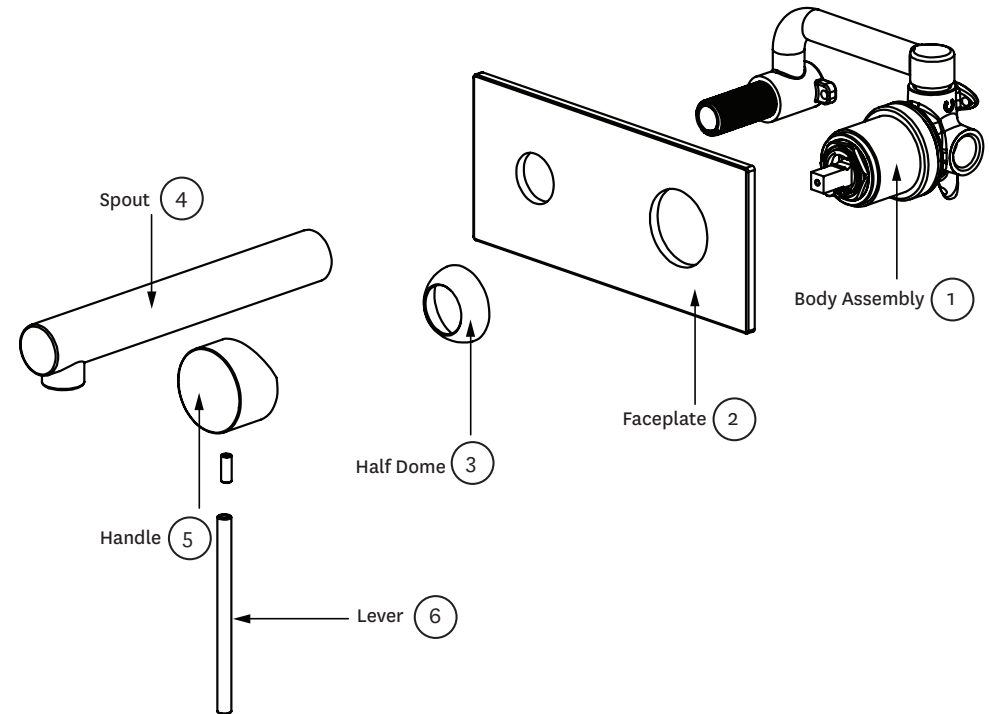
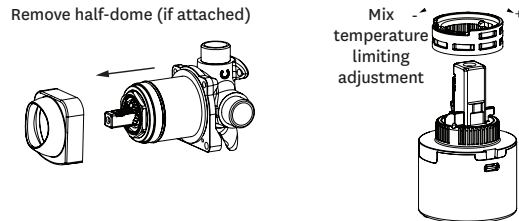
Care and Cleaning

Never use abrasives to clean this product. Clean regularly with contamination free warm soapy water and a damp soft cloth.

Ceramic Cartridge Adjustment

Do not remove the ceramic cartridge from the body while carrying out the following adjustments.

Note: the cartridge is factory set for maximum temperature.



www.methven.com

Customer Care Hotline: 1300 METHVEN (638 483)
Email: info@au.methven.com